

Steelcase

Worldwide leader for office furniture :
10 700 employees – 3 000 000 000\$

France :
1 098 employees – 258 M€

5 factories in Europe :
Sarrebouurg (F) – Rosenheim (D) – Durlangen (D)
Madrid (E) – Stribo (CZ)

LOGISTIQUE URBAINE DURABLE



Cluster



Contact : Marc Bazenet : +33 (0) 6 09 76 71 73

Organized by



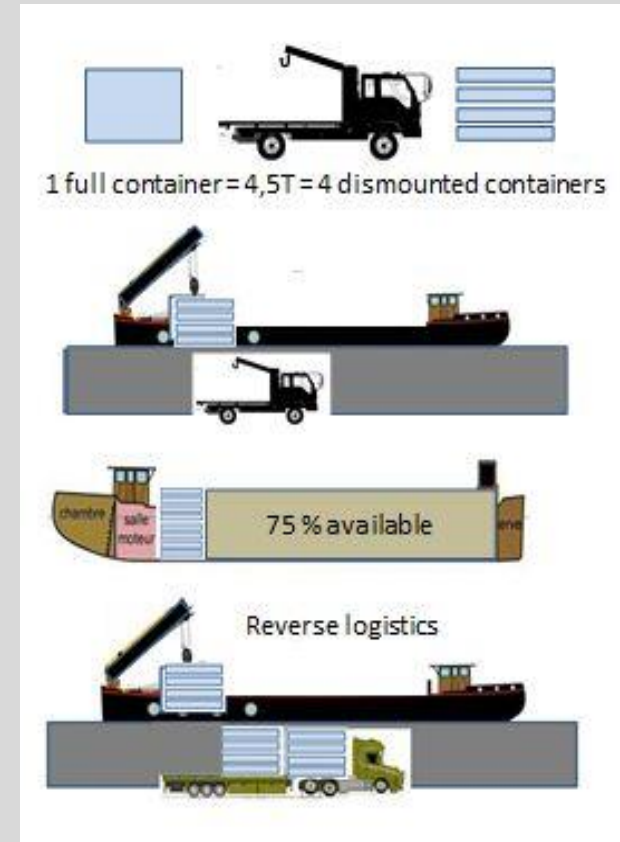
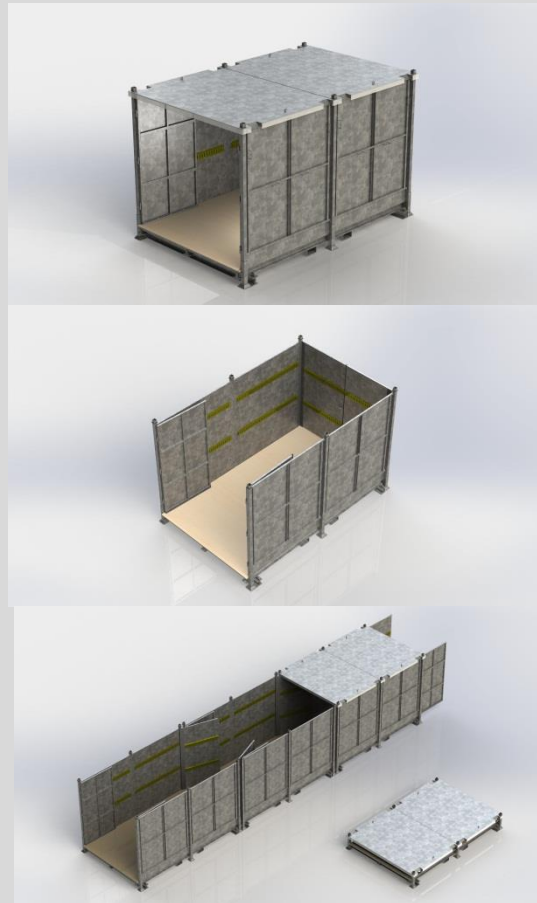
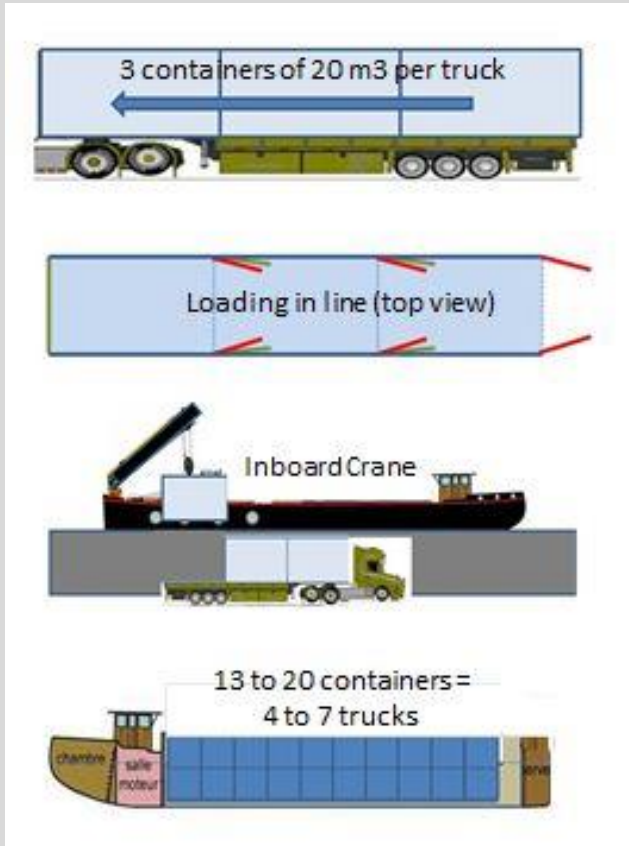
With the support of



SOCIETE DU PORT DE MERTERT
Société anonyme



How to reduce the modal shift



Organized by



With the support of



LE GOUVERNEMENT
DU GRAND-DUCHÉ DE LUXEMBOURG
Ministère du Développement durable
et des Infrastructures
Département des transports



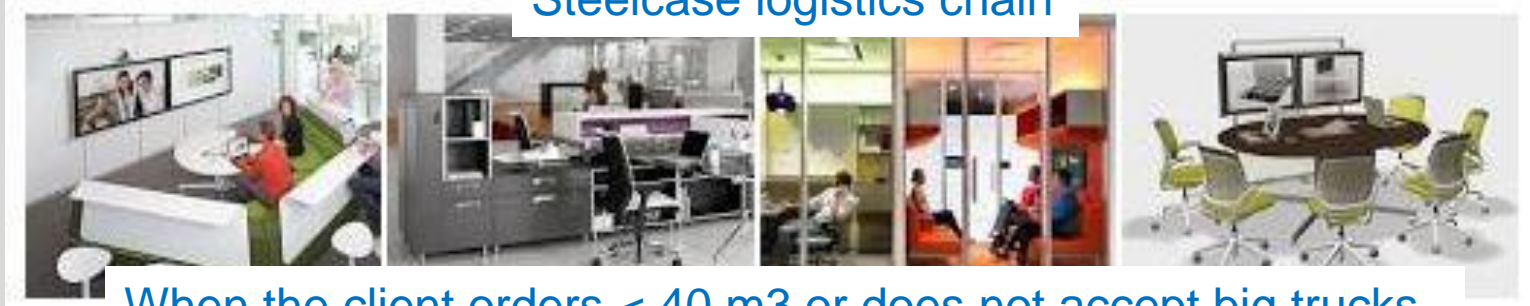
SPW
Service public
de Wallonie



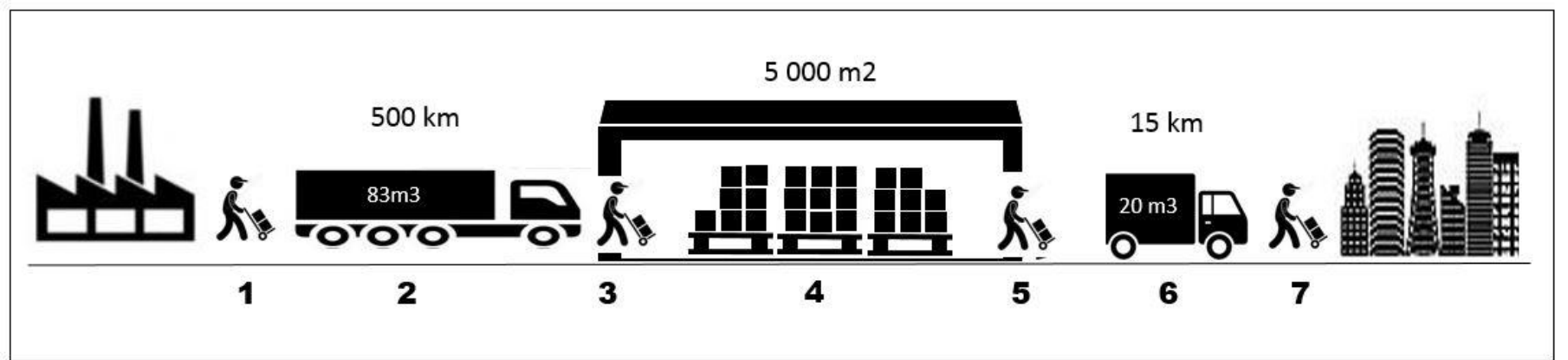
SOCIÉTÉ DU PORT DE MERTERT
Société anonyme



Steelcase logistics chain



When the client orders < 40 m³ or does not accept big trucks



Organized by



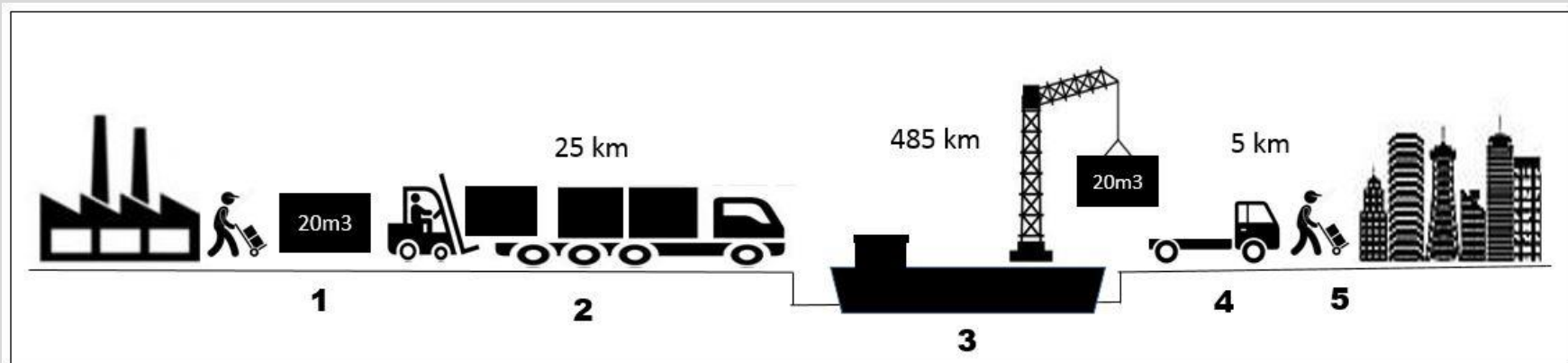
With the support of



SOCIÉTÉ DU PORT DE MERTERT



How to compensate the residual modal shift



Warehousing and last km delivery costs → 50% Savings



Organized by



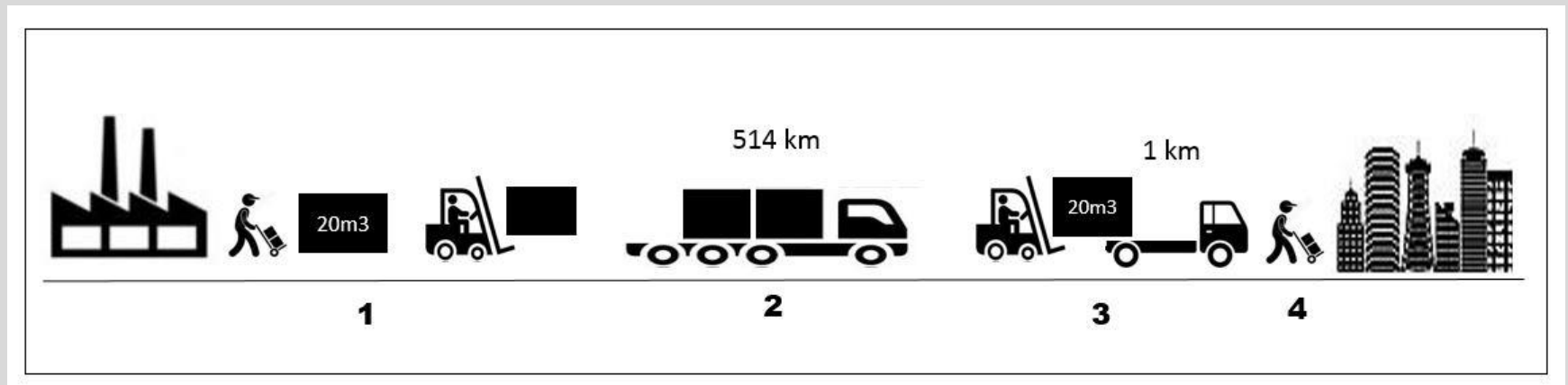
With the support of



SOCIETE DU PORT DE MERTERT
Société anonyme



In case of river rise or tide gate brake down



No change in loading–unloading tools and processes, neither for the shipper nor for the client

Optimisation of the Freycinets hold

Separation of the fonctions (loading, driving, assembling)

Less vehicules for the last km

2 suppliers Instead of 5

**43 points of improvement
In Savings
Productivity
Worker Security
& added services**

Less surface of warehousing

Craning in any port

More reactivity and security for the client

Big Savings in handling

Reverse log : pack. & Used furnitures

Better access to cities and clients warehouse

Organized by



With the support of



LE GOUVERNEMENT
DU GRAND-DUCHÉ DE LUXEMBOURG
Ministère du Développement durable
et des Infrastructures
Département des transports



SOCIÉTÉ DU PORT DE MERTERT
Société anonyme

